

NAPOLEON<sup>®</sup>  
FIREPLACES



AVAILABLE NOW



**S4**  
**EPA WOOD BURNING STOVE**

For more information or to place an order call 1-800-461-5581 or visit [napoleonfireplaces.com](http://napoleonfireplaces.com)

# S4 EPA Wood Burning Stove

Napoleon's S4 is a new contemporary EPA approved wood burning stove complete with a modern cast iron door and pedestal base in a metallic charcoal finish.

The stove features a slide out ash drawer with a removable ash pan and lid for easy cleaning. The S4 also features a "secure lock" lever action door handle (with a removable handle shield) that remains in a convenient open position when the door is open, making refueling safe and easy.

The S4 is the perfect wood burning stove for those wanting wood burning technology with a clean, contemporary look.

## Product Features

- Up to 70,000 BTU's
- Removable stainless steel floating secondary air manifold
- Hidden hinges and extra large glass viewing area
- Contemporary EPA wood stove complete with contemporary cast door and cast pedestal base
- Precision slide out ash drawer with removable ash pan complete with lid
- "Secure lock" lever action door handle remains in a convenient up position while re-loading fuel
- Removable handle sleeve for added safety
- Convenient holder for handle sleeve located in slide out ash drawer
- Heavy duty 5/16" firebox top
- Vortex™ combustion system
- Ceramic fiber baffle system
- Optional door accent trim in satin chrome plated finish
- Metallic charcoal finish
- Mobile Home Approved - US Only
- The S4 comes complete, ready for installation



## INTRODUCTORY BONUS!!

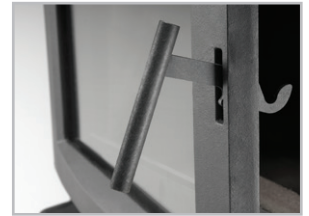
### 62140 - PRO Series Gloves

Receive a FREE pair with each stove purchase  
LIMITED TIME OFFER (Valued at \$29.99)

## Features/Options/Accessories



Slide Out Ash Drawer



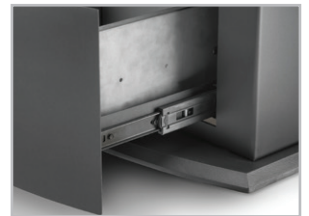
"Secure Lock" Lever Action Handle

Lever action handle remains in an "up" position

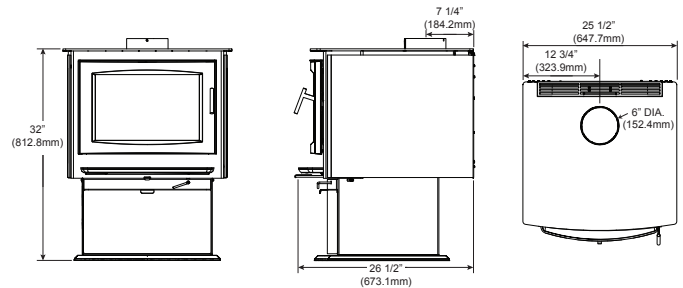


Hidden Door Hinges

For a clean, contemporary look



Ash Pan Rollers



Model	BTU's (output)	Firebox Capacity	Area Heated (sq. ft.)	Burn Time (hours)	Log Size (max)	Emmissions (grams per hour)	Flue Diameter	Catalytic Combuster	Mobile Home Approved	Blower Kit Available
S4	70,000	2.25	800-2,000+	9	18"	3.5	6"	No	Yes (US Only)	Yes

Certified under U.S. Environmental Protection Agency (E.P.A.) July 1990 40 C.F.R. Part 60 and the Oregon Department of Environmental Quality (D.E.Q.) particulate emission standards by E.E.M.C these stoves have been tested and listed by Intertek testing services to standards: CSA B366.2, ULC S627, UL 1482. Figures may vary with individual conditions such as floor plan layout, insulation value/heat loss of the house and geographical location.

Consult your owner's manual for complete installation instructions, accurate framing dimensions and proper clearances to combustible material. Check all local and national building codes and gas regulations. All specifications are subject to change without prior notice due to on-going product improvements. Products may not be exactly as shown. Napoleon® is a registered trademark of Wolf Steel Ltd. © Wolf Steel Ltd.

Authorized Dealer



24 Napoleon Road, Barrie, Ontario, Canada L4M 0G8  
103 Miller Drive, Crittenden, Kentucky, USA 41030  
7200 Trans Canada Highway, Montreal, Quebec, Canada H4T 1A3  
Tel: 705-721-1212 Fax: 705-722-6031  
napoleonfireplaces.com

